

FIG. 69 STARTER MOTOR ASSEMBLY (SHEET 1 OF 2)

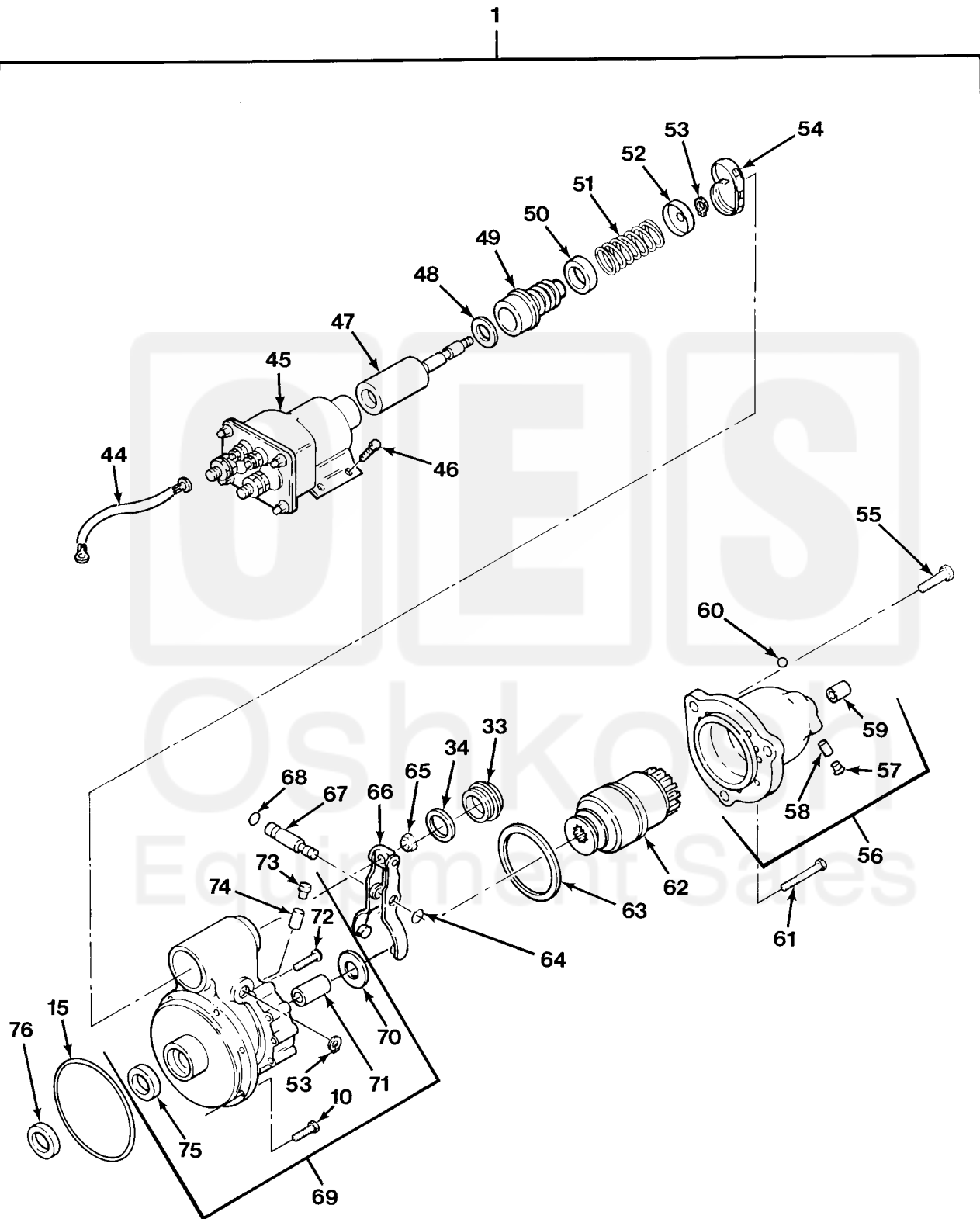


FIG.69 STARTER MOTOR ASSEMBLY (SHEET 2 OF 2)

SECTION II

TM 9-2320-279-24P

(1) ITEM NO	(2) SMR CODE	(3) CAGEC	(4) PART NUMBER	(5) DESCRIPTION AND USABLE ON CODES(UOC)	(6) QTY
GROUP 0603 STARTING MOTOR FIG.69 STARTER MOTOR ASSEMBLY					
1	PAOFH	16764	1990272	STARTER,ENGINE,ELEC	1
2	PAFZZ	16764	1979451	.NUT,PLAIN,EXTENDED	2
3	PAOZZ	96906	MS51967-44	.NUT,PLAIN,HEXAGON	2
4	PAFZZ	16764	11504248	.WASHER,LOCK	1
5	PAFZZ	88044	AN960-816L	.WASHER,FLAT	2
6	PAFZZ	16764	1851632	.PARTS KIT,ELECTRICA	1
7	XDFZZ	16764	1913027	..INSULATOR,BOWL	1
8	XAFZZ	16764	1851603	..BUSHING	1
9	PAFZZ	16764	1913084	.WASHER,FLAT	2
10	PAFZZ	16764	1914869	.BOLT,MACHINE	13
11	XAFFF	16764	1945848	.STARTER HOUSING,ENG	1
12	PAFZZ	16764	1894638	..BEARING,SLEEVE	1
13	PAFZZ	16764	1972977	..WICK	1
14	PAFZZ	16764	1978756	..CAP,PROTECTIVE,DUST	1
15	PAFZZ	16764	1945860	.PACKING,PREFORMED	2
16	PAFZZ	16764	1964516	.INSULATOR,BRUSH PLA	1
17	PAFFF	16764	1985066	.HOLDER ASSEMBLY,ELE	1
18	PAFZZ	16764	1968998	..SCREW TAPPING	9
19	XAFZZ	16764	1984981	..PLATE,STATOR,MOTOR	1
20	XAFZZ	16764	1984981	..PLATE,STATOR,MOTOR	1
21	XAFZZ	16764	1985067	..PLATE ASSEMBLY	1
22	PAFZZ	16764	1979389	..PLATE,INSULATOR HOL	3
23	PAFZZ	16764	1984979	..HOLDER,ELECTRICAL C	6
24	XAFZZ	16764	1984980	...HOLDER,ELECTRICAL C	1
25	PAFZZ	16764	1979391	...SPRING,HELICAL,TORS	1
26	PAFZZ	16764	1979388	..PLATE,GROUND HOLDER	3
27	PFFZZ	16764	1965093	..INSULATOR,PLATE	3
28	PAFZZ	16764	1913080	..WASHER,FLAT	6
29	PAFZZ	16764	1852888	.BRUSH,ELECTRICAL CO	6
30	PAFZZ	16764	1847807	.SCREW,MACHINE	3
31	PAFZZ	16764	1953238	.BRACKET,ELECTRICAL	1
32	PAFZZ	16764	1922457	.WASHER,FLAT	2
33	PAFZZ	16764	1945356	.PLUG,MACHINE THREAD	2
34	PAFZZ	16764	1964857	.GASKET	2
35	XAFZZ	16764	1869747	.POLE SHOE,STARTER	6
36	XAFZZ	16764	1964294	.SCREW,ASSEMBLED WAS	12
37	XAFZZ	16764	1914873	.PLATE,INSULATION	3
38	XAFZZ	16764	1945853	.WINDING,MOTOR FIELD	1
39	PAFZZ	16764	1950561	..TERMINAL,STUD	1
40	PAFZZ	16764	1965472	.INSULATOR,BUSHING	1
41	PAFZZ	16764	1955989	.INSULATOR,PLATE	1
42	XAFZZ	16764	1945840	.ARMATURE,MOTOR	1
43	PAFZZ	16764	1953237	.WASHER,FLAT	1
44	PAOZZ	16764	10497104	.LEAD ASSEMBLY,ELECT	1
45	PAFZZ	16764	1115563	.RELAY,ELECTROMAGNET	1
46	PAFZZ	16764	1930611	.BOLT,MACHINE STARTER,SOLENOID	4
HOLDDOWN					
47	PAFZZ	16764	1948522	.PLUNGER,SOLENOID	1
48	PAFZZ	16764	1948519	.WASHER,FLAT	1